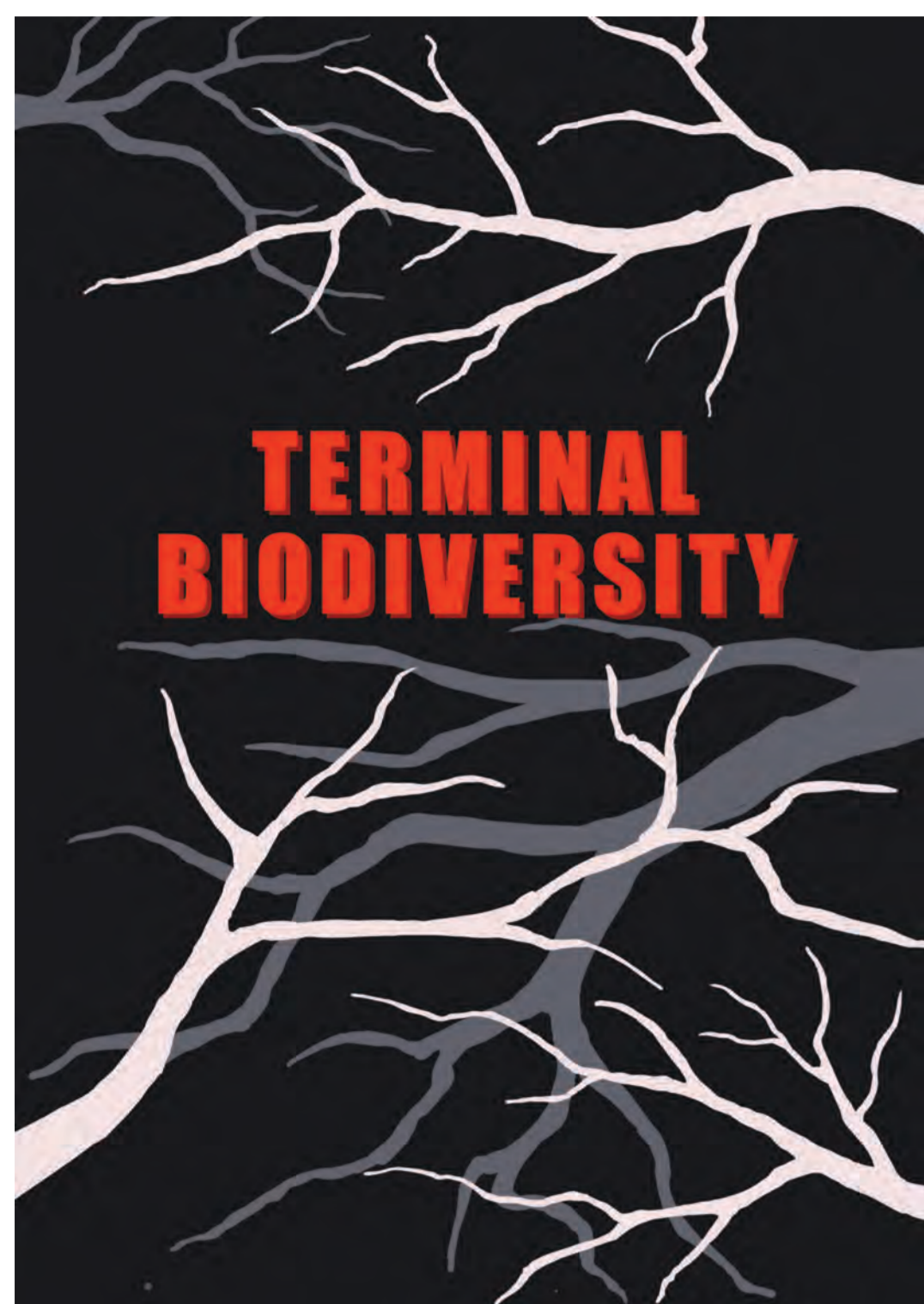




GRAPHCOM CC

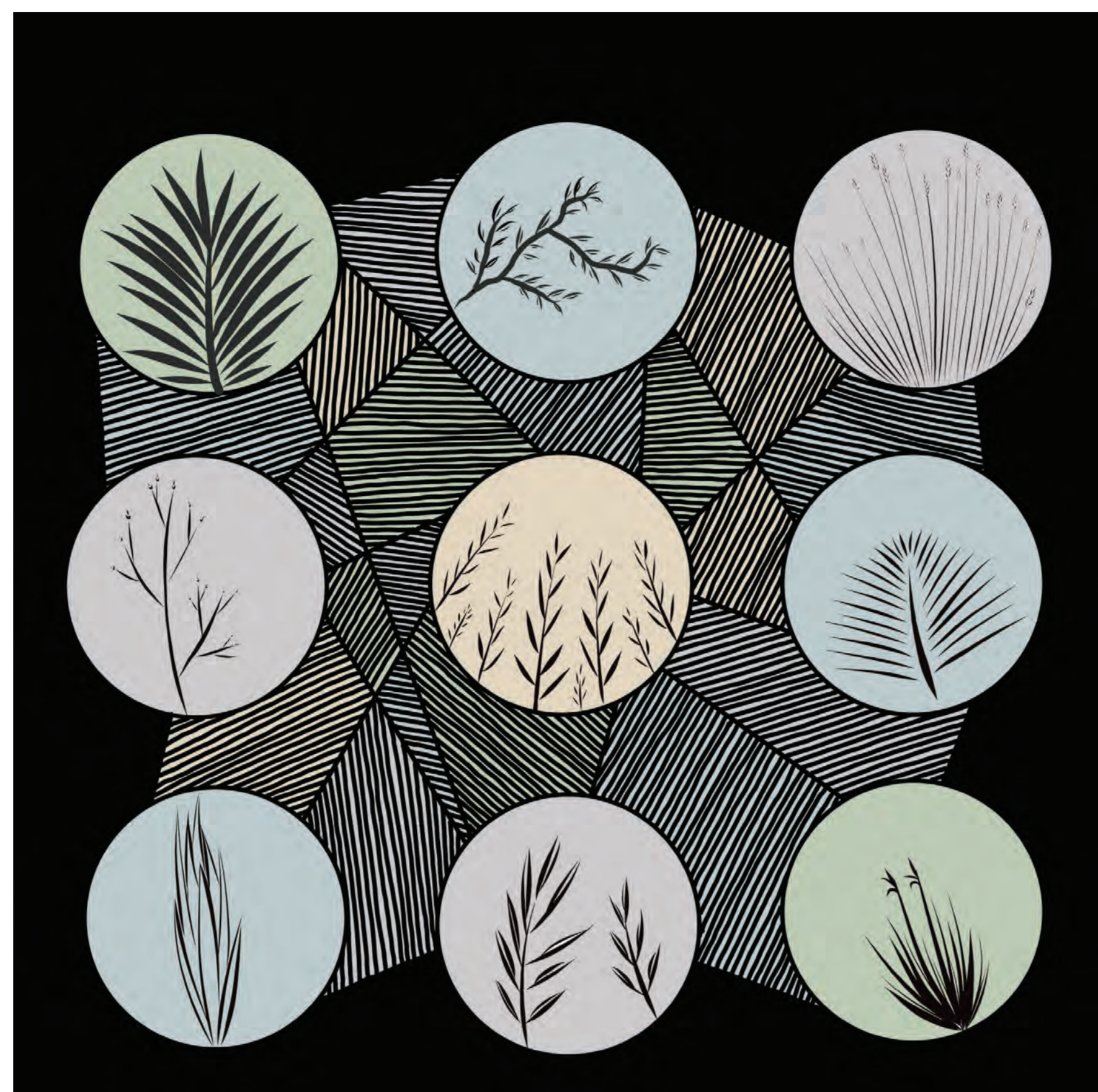
WEB DESIGN & DEVELOPMENT

COVER PAGE

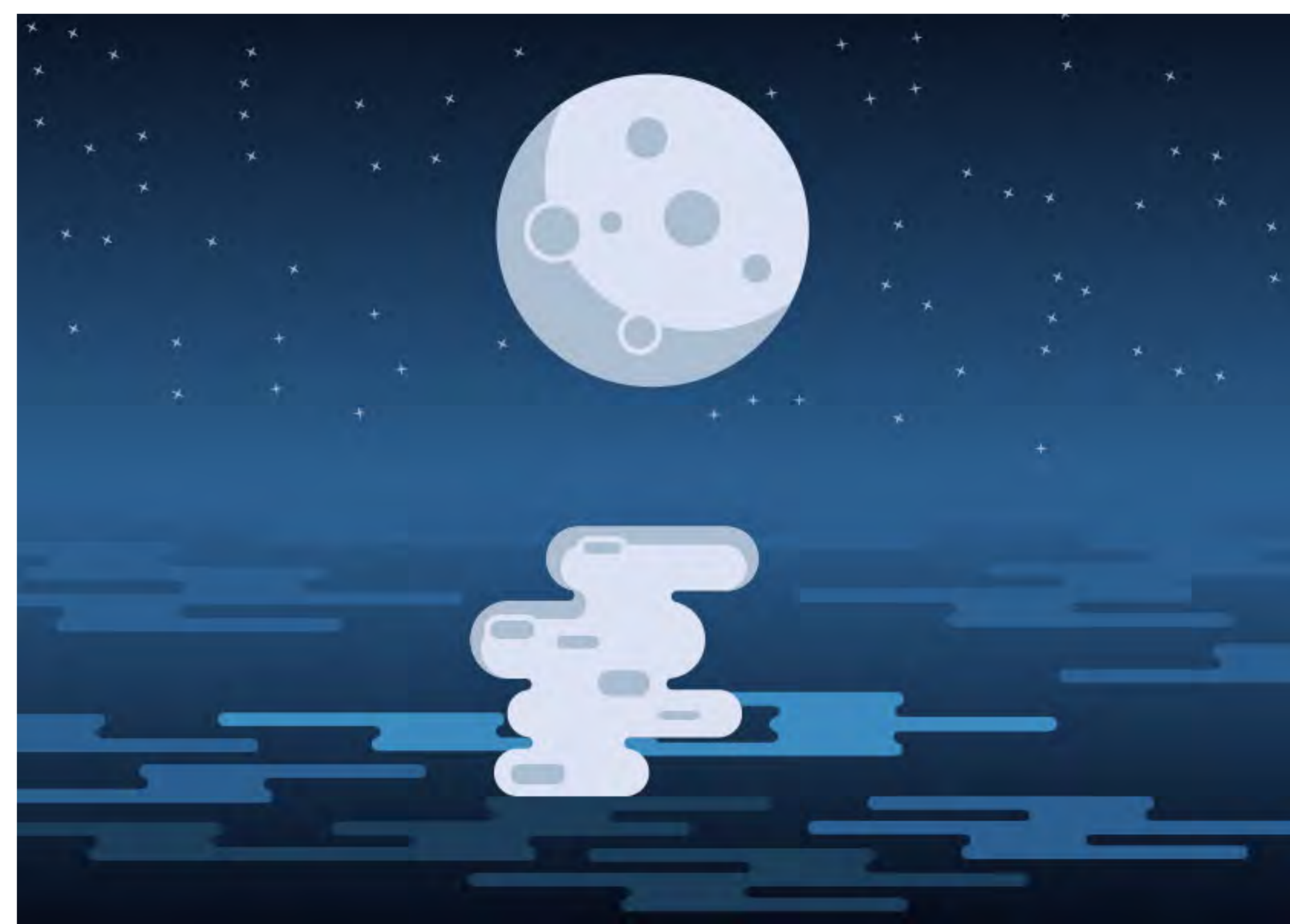


This is a cover page I made for one of my assignments. The project was about conservation and the fact that we are destroying the biodiversity of the world we live in. It is to the point where scientists believe we are causing the current extinction event. Visit graphcomdesign/biodiversity.co.za to see the project page or scan the QR code below

ILLUSTRATION



FLAT ILLUSTRATION FOR CSS ANIMATION



This is an illustration I made to create a CSS animation. I used a mix of CSS and SVG code to create the animation. Check it out on graphcomdesign/css.co.za or by scanning the QR code below.

WEBSITE FOR INHANCE

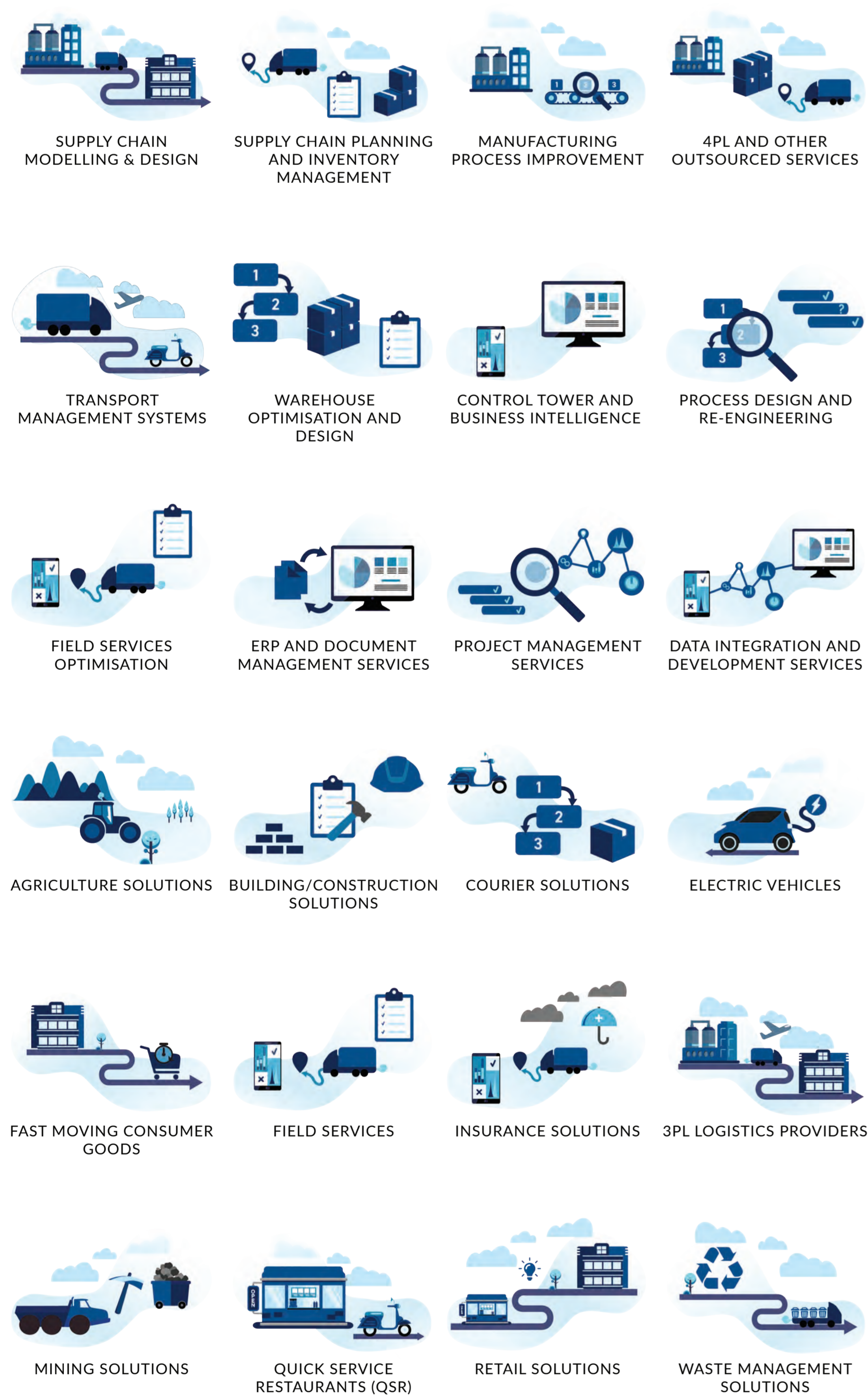


WEBSITE AND ICONS FOR STILLE WATERS



I was asked to make a website for Stille Waters, a guest house in the Eastern Cape. I made a html website at first, though the client wanted a WordPress site later on. The photos for this project were taken by me or provided by the client. I also made icons for Stille Waters based on the different activities available in the area, as well as provided buttons to get recommended routes on Google Maps to places in the area. To see the project, visit graphcomdesign/stillwaters.co.za or scan the QR code below.

ICONS FOR INHANCE



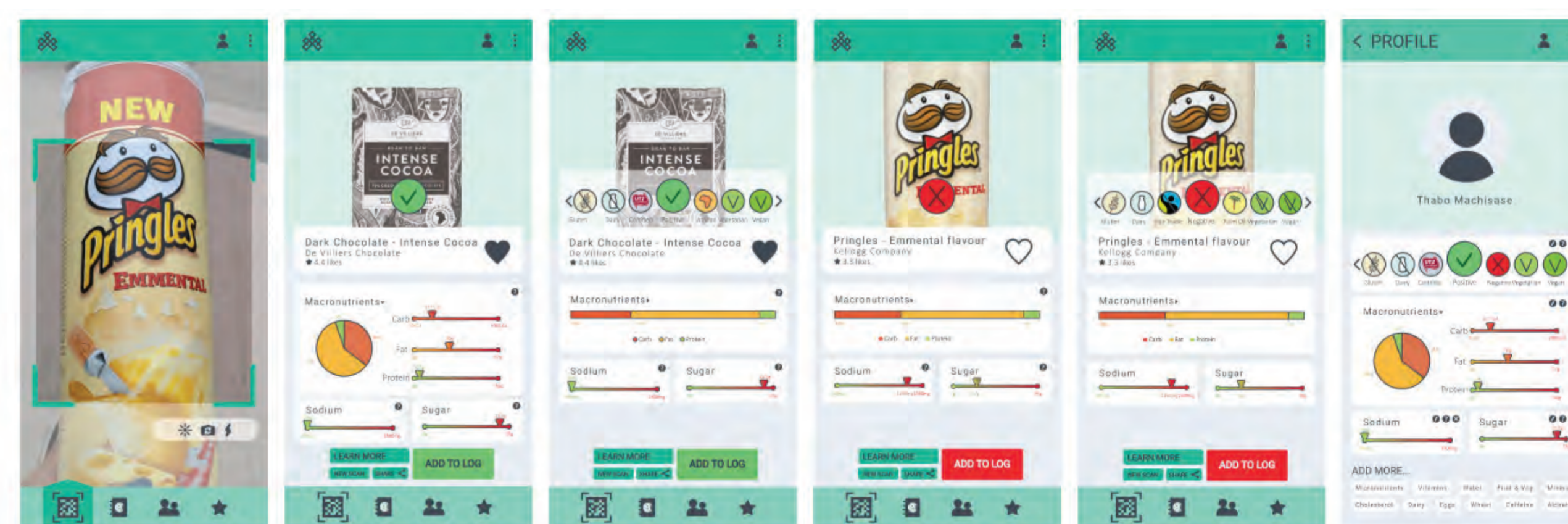
Sizwe Africa rebranded their company as Inhance and asked me to work on their new CI. I worked with Franca Le Roy to create the brand. While she did the logo, I made the website and many of the icons. The images used came from unsplash.com and were edited to fit the brand. The website was made with WordPress. This is a four-page website consisting of an about, services, sectors and contact pages. We created icons for all the services and sectors, consisting of 24 icons. To see the project, visit graphcomdesign/inhance.co.za or scan the QR code below.

BRANDING



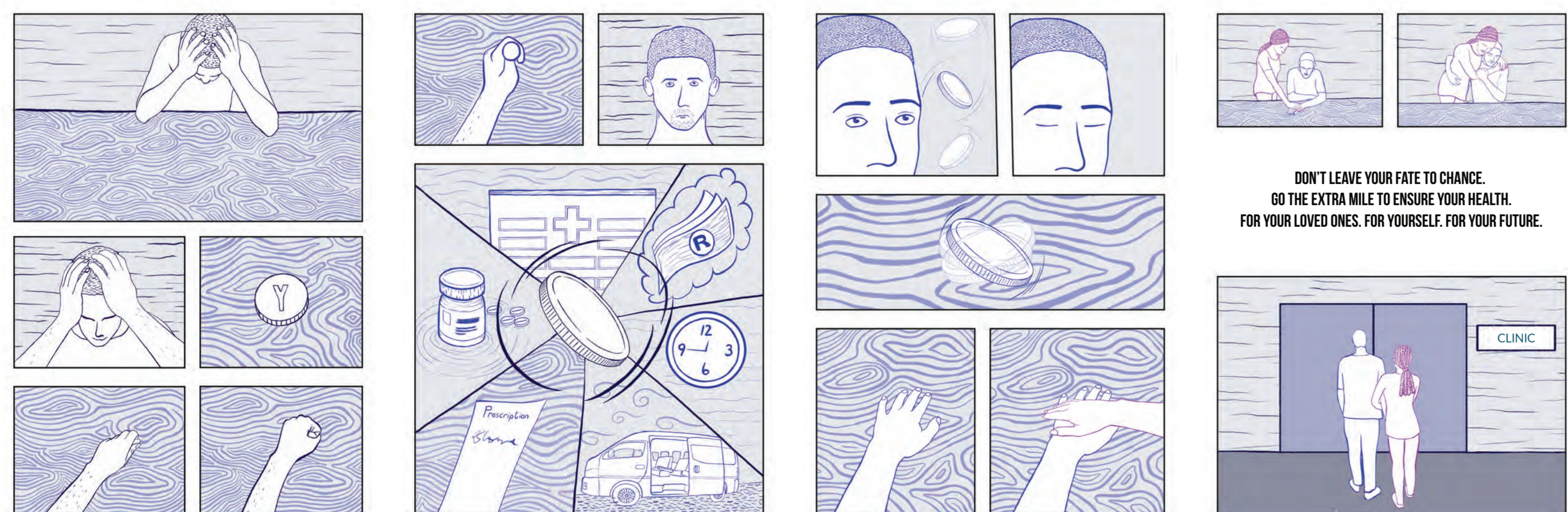
Cornnoisseur is a brand being developed for a gourmet popcorn business. I created the brand visuals that the client wanted. The client provided the photography and I made a mock-up of the product for use on the web. To see the project page, visit graphcomdesign/cornnoisseur.co.za or scan the QR code below.

EXPOSE APPLICATION PROTOTYPE



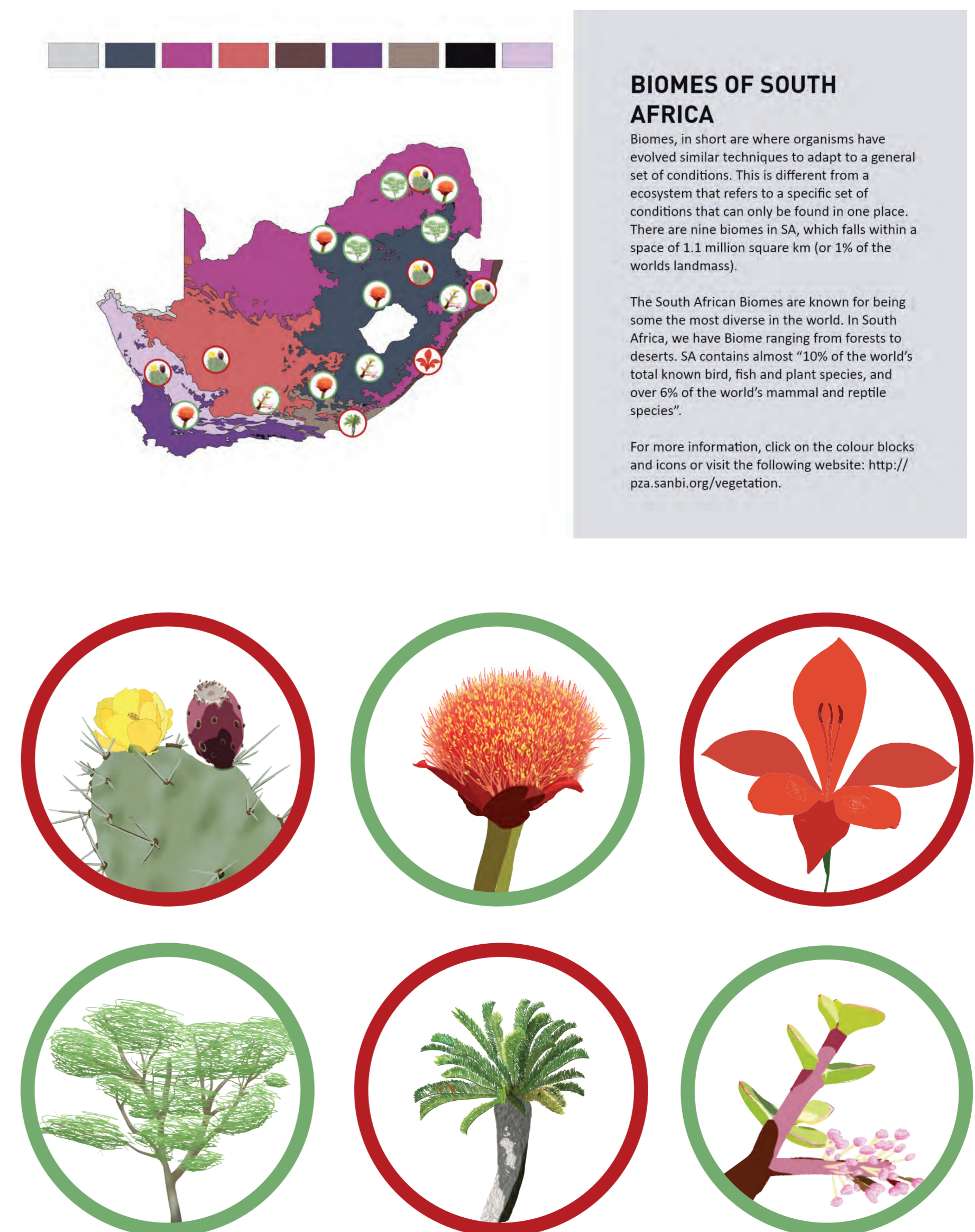
Expose is an application that I am working on that allows you to scan food products to know whether you suit your specific needs. As a person who is allergic to dairy, this is an app that I personally want. One of the most difficult things when you have a specific diet is the learning curve of learning what to look for. This app is to help those who have specific diets and for people who simply want to know if a product is what it advertises itself to be. To see the project, visit graphcomdesign/exposeapp.co.za or scan the QR code below.

STORYBOARDING FOR A COMIC PAGE.



The concept is to go the extra mile, not only for yourself but for those around you. This is based on the fact that men tend to not get frequent medical care due to social stigmas. This story is to change the perception of getting medical care as a weakness to a responsibility to yourself and your loved ones. Visit graphcomdesign/brandchallenge.co.za to see the project page or scan the QR code under brand challenge to the right.

PROTOTYPE FOR BIODIVERSITY TERMINAL



The prototype was made as a proof of concept that an interactive map with basic information is something easier to understand compared to a text-based database. This is a practical component for my terminal biodiversity project in that it allows you to learn about the state of biodiversity. I made icons to represent some plants to show what it will look like. Visit graphcomdesign/biodiversity.co.za to see the project page or scan the QR code to the right.

LINKS



0716001434
graphcom.webdesign@gmail.com
linkedin.com/in/graphcomdesign
behance.net/graphcomdesign/

CHRISTINE VAN ZYL

Visit graphcomdesign.co.za to see my portfolio.